

### More Information?

If you want to know more about this globally patented aid, please visit the website [www.stockingaid.com](http://www.stockingaid.com). There is also an instructional video.

WestCare  
Postbus 10620  
1001 EP Amsterdam, The Netherlands  
[www.stockingaid.com](http://www.stockingaid.com)

### Available in four sizes:

Steve+® easyON Extra Small for calf circumference 25-30 cm / 9.8-11.8 in

Steve+® easyON Small for calf circumference 30-46 cm / 11.8-15 Inch

Steve+® easyON Medium for calf circumference 38-46 cm / 15-18.1 Inch

Steve+® easyON Large for calf circumference 46-54 cm / 18.1-21.3 in



Dealerstamp

**Zebra Lymphatic**  
[tony@zebralympatic.com.au](mailto:tony@zebralympatic.com.au)  
0411129759



# The new way to put on and remove compression stockings



# Steve+®

## The new way to put on and remove arm and leg compression stockings.

All over the world millions of people, both young and old, wear therapeutic elastic stockings. Until now, putting on and removing these stockings was no easy task. Steve+® solves this problem.

With Steve+® you can easily put on and remove all types of stockings - with or without assistance.

This can be done while sitting or lying down. Steve+® is the perfect aid, wherever you are.

### Using Steve+® without assistance

Bending over is no longer required, so even rheumatism or arthritis sufferers can easily use Steve+®. Steve+® is completely demountable, making it easy to take with you.

### Using Steve+® with assistance

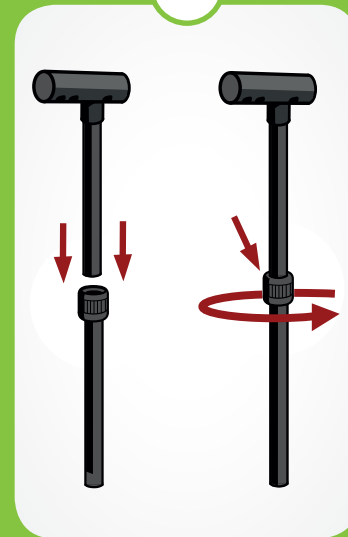
Steve+® is a convenient solution for medical professionals and caregivers. Any stocking can be put on or removed from the care receiver - with hardly any effort.

### A wide range of sizes to avoid wear

Steve+® is available in various sizes to fit all requirements. As a result, the stocking provides more support with minimal wear.

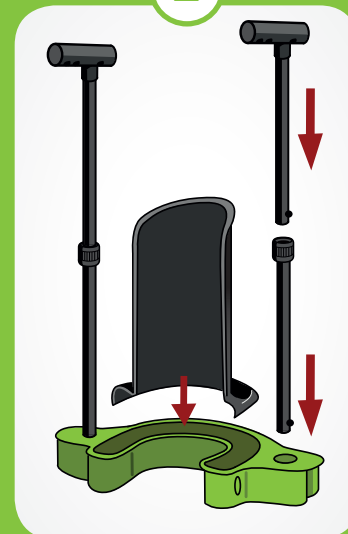
## Assembly

1

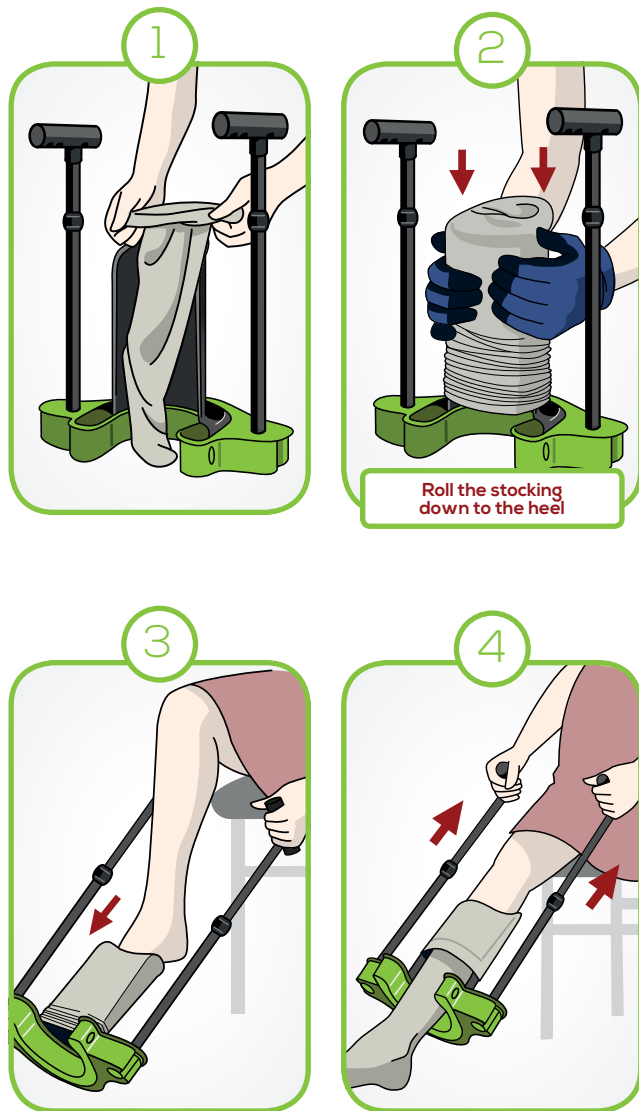


**Note: after assembly of the tube parts, do not take them apart**

2

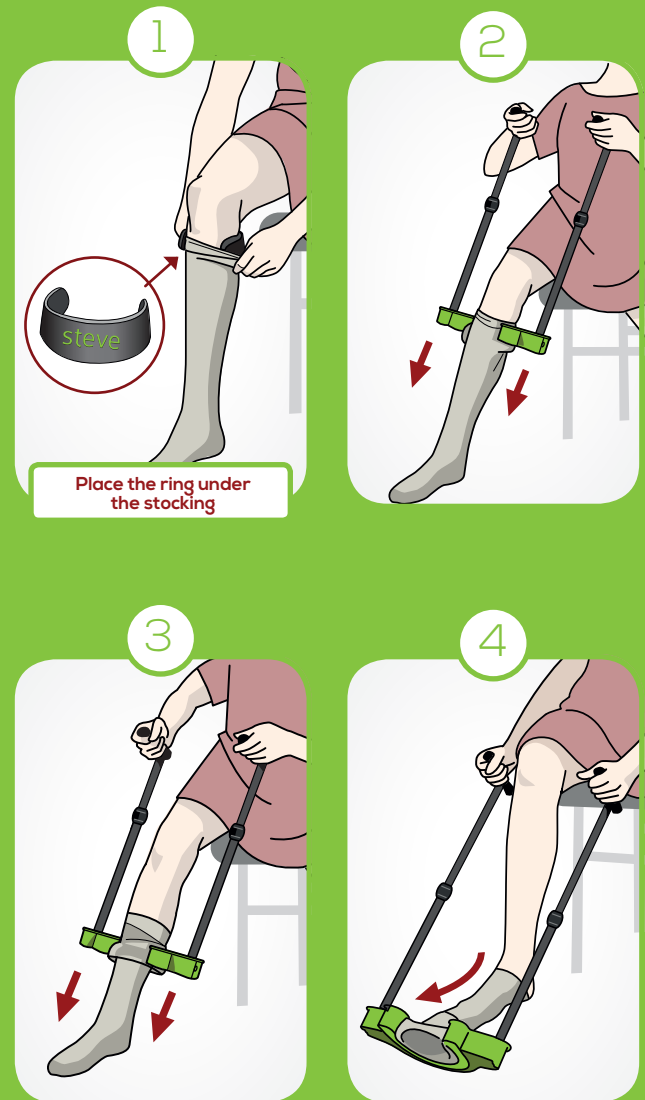


# Self-application

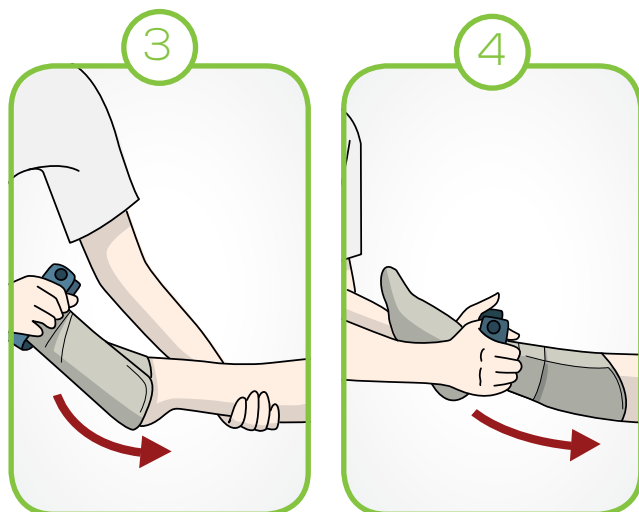
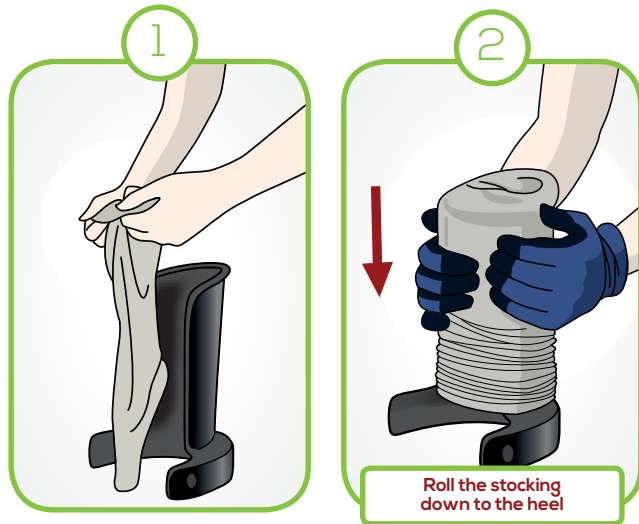


# Self-removal

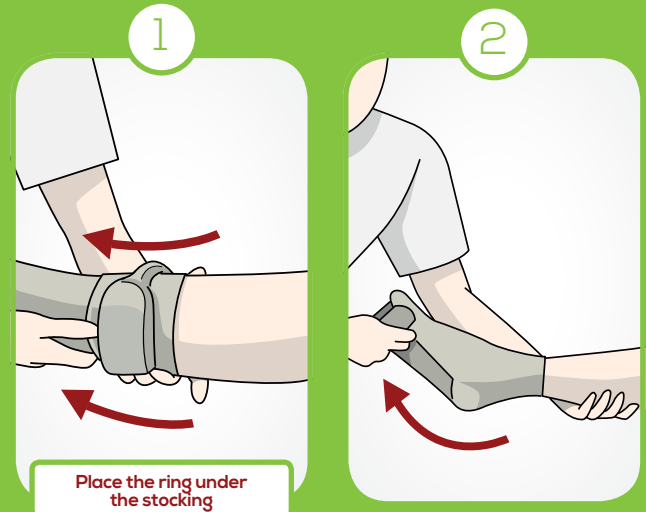
Remove the black donning device of Steve+, by means of one of the push buttons



## Application by a nurse



## Removal by nurse



## Putting on the arm compression stocking

